




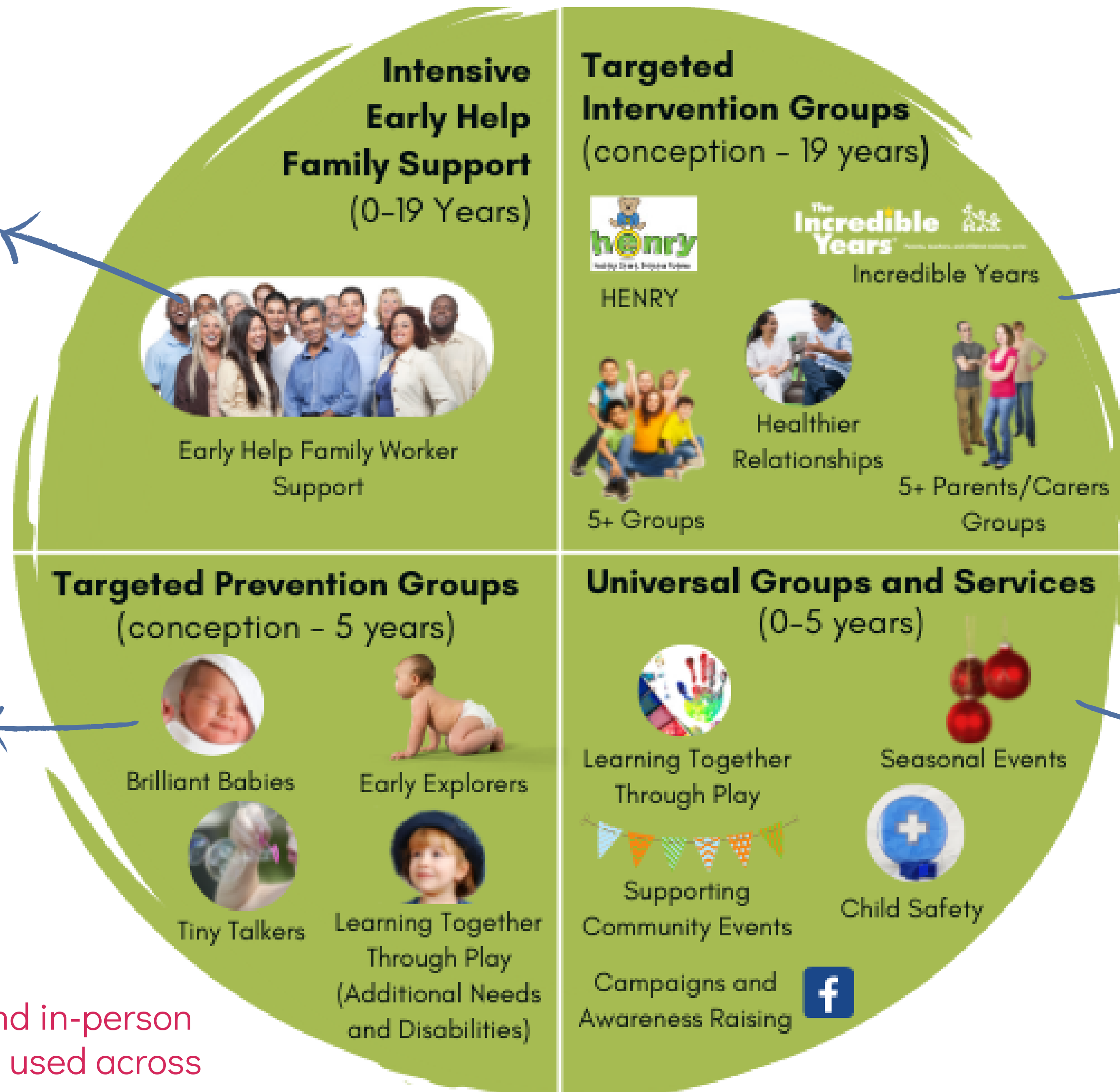
Prevention and Intervention Pathway: A Range of Service Delivery Options


[Click here to access the support of the Early Help Family Service: complete a **Multi-Agency Referral Form**](#)


[Click here to access the Prevention and Intervention offer: complete a **Request for Services Form**](#)


[Click here to access the Prevention and Intervention offer: complete a **Request for Services Form**](#)


[Click here to access the Universal offer: complete a **Registration Form**](#)



A range of digital and in-person delivery options are used across individual and group prevention and intervention services.

Early Help 0-19 Services

